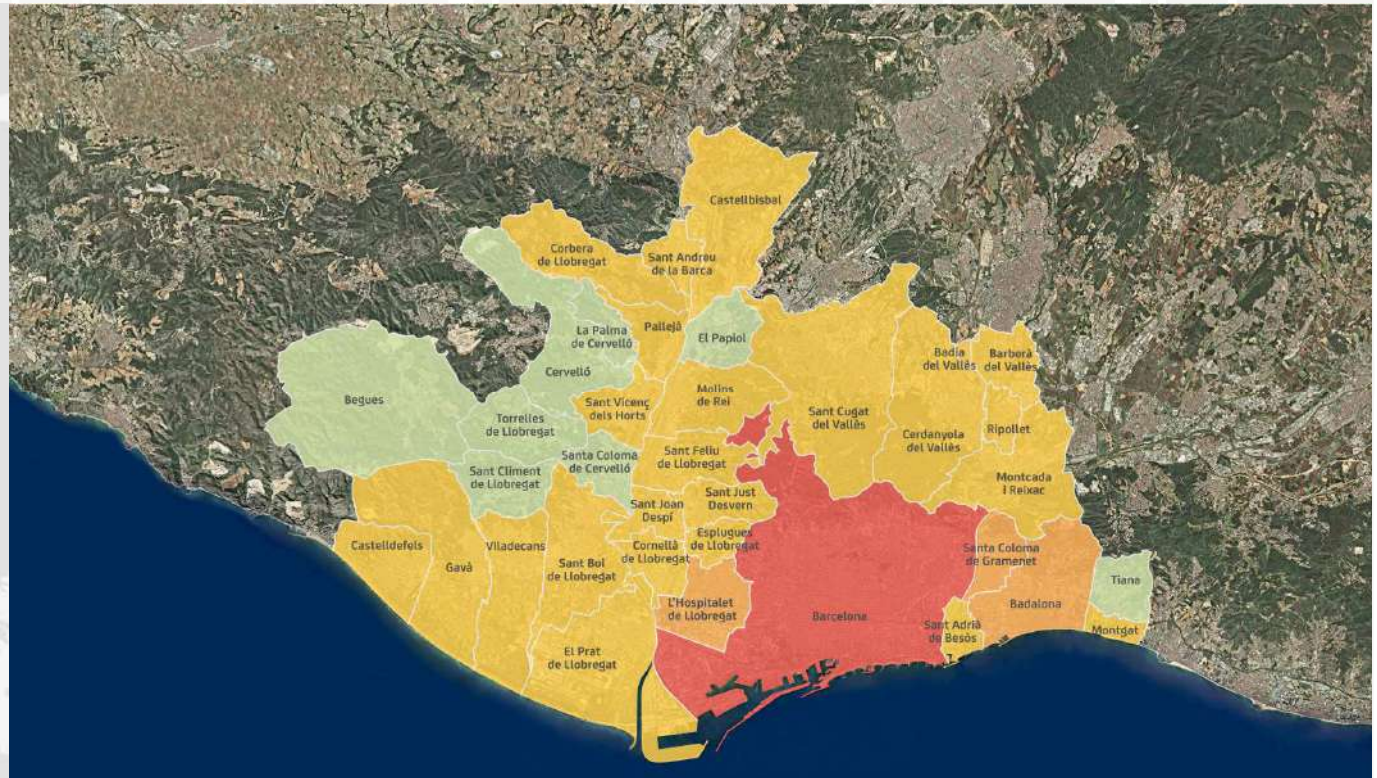




Xavier Tiana
Head of International Relations

THE METROPOLITAN TERRITORY



■ Over 1 million people

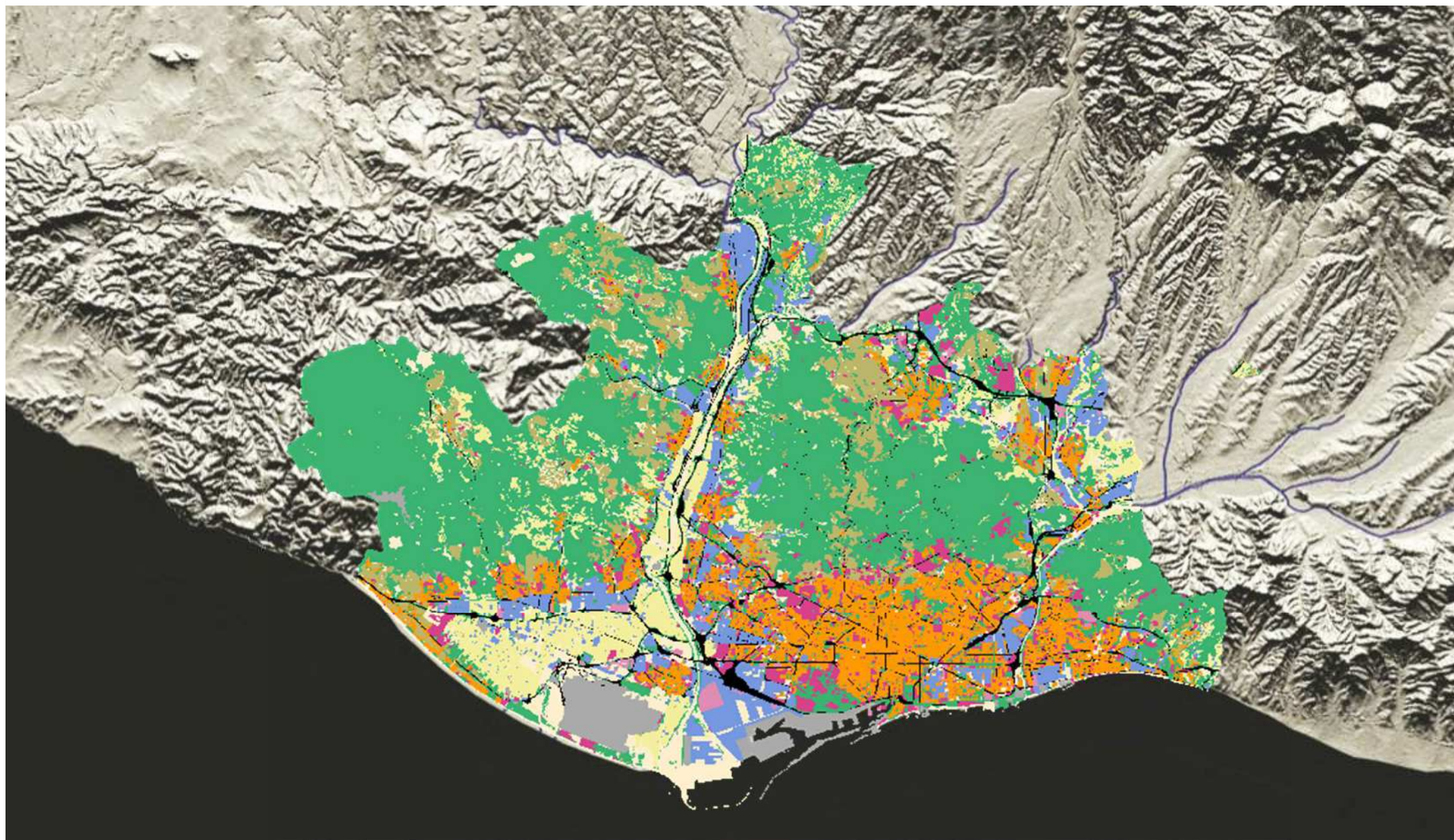
■ 100,000 to 1 million inhabitants

■ 10,000 to 100,000 inhabitants

■ Fewer than 10,000 inhabitants


36 municipalities, 635 km² & 3,2 M inhabitants

LAND USES



 Residential (high density)

 Residential (low density)

 Facilities

 Industrial

 Green areas



The institution

INSTITUTIONAL HISTORY



Law 31/2010

Association of Municipalities

Metropolitan Water Service and Waste
Treatment Authority

Metropolitan Transport Authority

Metropolitan Institute of Land Development
And Property Management

Waste Water Metropolitan Company, S.A

Centre Metropolità d'Informació
i Promoció del Transport S.A.

Ferrocarrils Metropolitans de Barcelona, S.A

Transports de Barcelona, S.A.

New AMB Government 2019-2023

Metropolitan Council
Board of Governors
Council of Mayors
Accounts Commission

President: **Ada Colau**

Executive vice-president: **Antonio Balmón**

Vice-president: **Maria Miranda**

Vice-president: **Lluís Mijoler**

Vice-president: **Joan Borràs**

Vice-president: **Isidre Sierra**

Vice-president for Mobility, Transport and Sustainability:

Antoni Poveda

Vice-president for Ecology: **Eloi Badia**

Vice-president for Strategic Planning: **Jordi Martí**

Vice-president for Social and Economic Development:

Montserrat Ballarín

Vice-president for International Relations and

Cooperation: **Ernest Maragall**

Vice-president for Urban Planning Policies: **Jordi Sánchez**

General Manager: **Ramon Torra**

1953

Regional Urban Development Plan of Barcelona:

Barcelona's Urban Planning Committee (CUB)
(the first metropolitan body) 27 municipalities

1974

Decree Law 5/1974:

- Barcelona Metropolitan Municipal Agency (EMMB)
- Barcelona Metropolitan Corporation (CMB)

1976

General Metropolitan Plan (PGM):

27 municipalities

1987-1988

Law 7/1987:

- Termination of CMB
- Creation of EMSHTR and EMT

Voluntary association of municipalities: MMAMB

AMB = MMAMB + EMA (EMSHTR) + EMT

2010-2011

Law 31/2010

Creation of the Barcelona Metropolitan Area (AMB)

AMB's COMPETENCES

Land and Housing



Environment



Mobility and Transport



Strategic Planning



Social and Economic Development



International Relations

ORGANISATIONAL STRUCTURE

GOVERNMENT

Metropolitan Council
Board of Governors
Presidency
Executive Vice-presidency
Areas' presidencies
General Management

ADMINISTRATION AND TERRITORY

General Services
Finance and Economics
Infrastructures
Public Space
Housing Policies

STRATEGIC PLANNING

Metropolitan and Regional
Planning
Studies
Participation

INTERNATIONAL

International Relations
and Cooperation

DEVELOPMENT OF URBAN PLANNING POLICIES

Urban planning
Metropolitan Urban Master
Plan (PDU)

ECOLOGY

Water
Waste
Sustainability

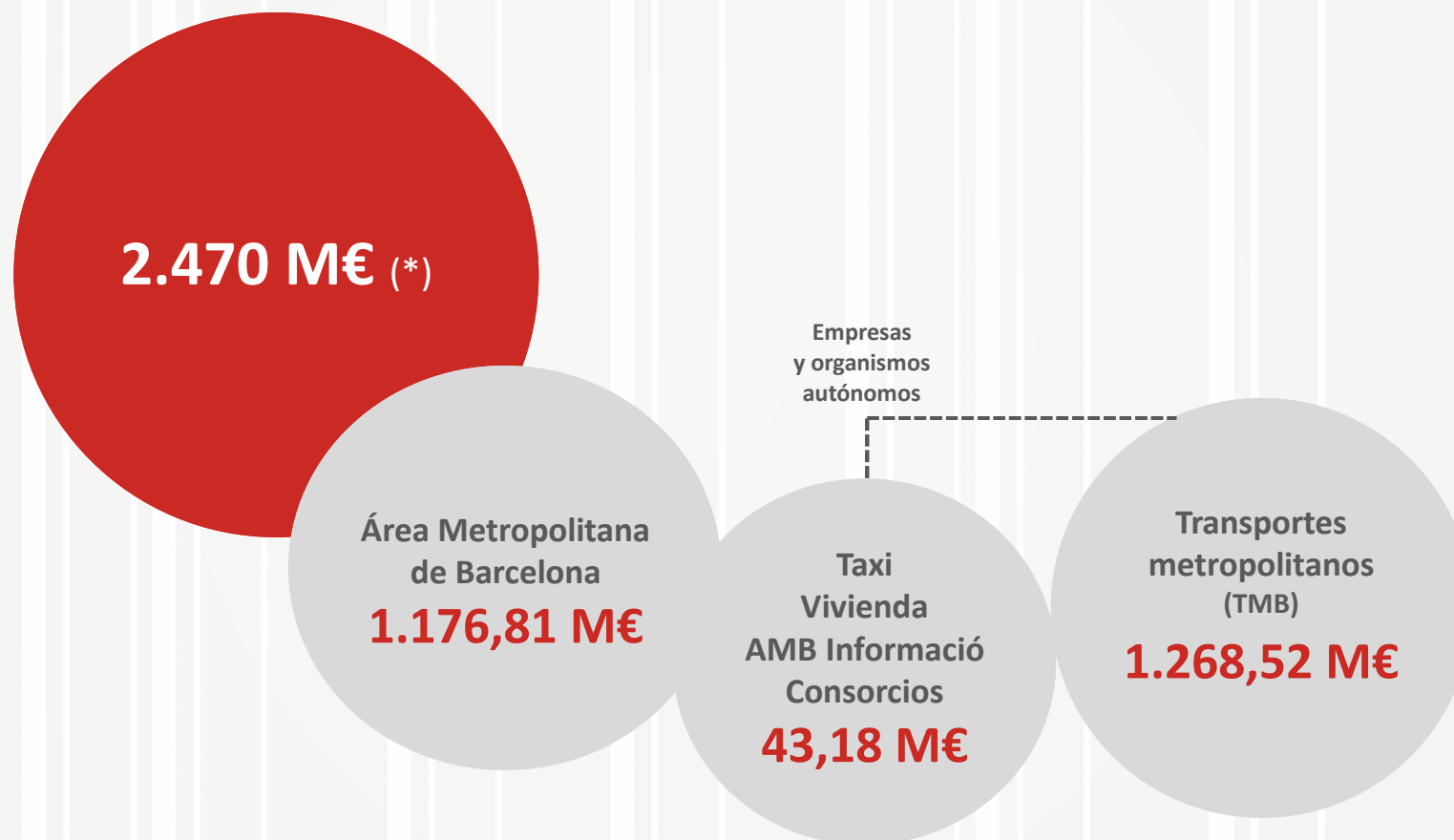
MOBILITY, TRANSPORT AND SUSTAINABILITY

Public Transport
Sustainable Mobility
Taxi Services

SOCIAL AND ECONOMIC DEVELOPMENT

Social Policies
Economic Activity
Promotion
Economic Development
Agency

AMB – BUDGET 2023



(*) En el presupuesto consolidado se ajustan varias operaciones internas: 18,66 M€



Territory

PUBLIC SPACE

HOUSING

INFRASTRUCTURES

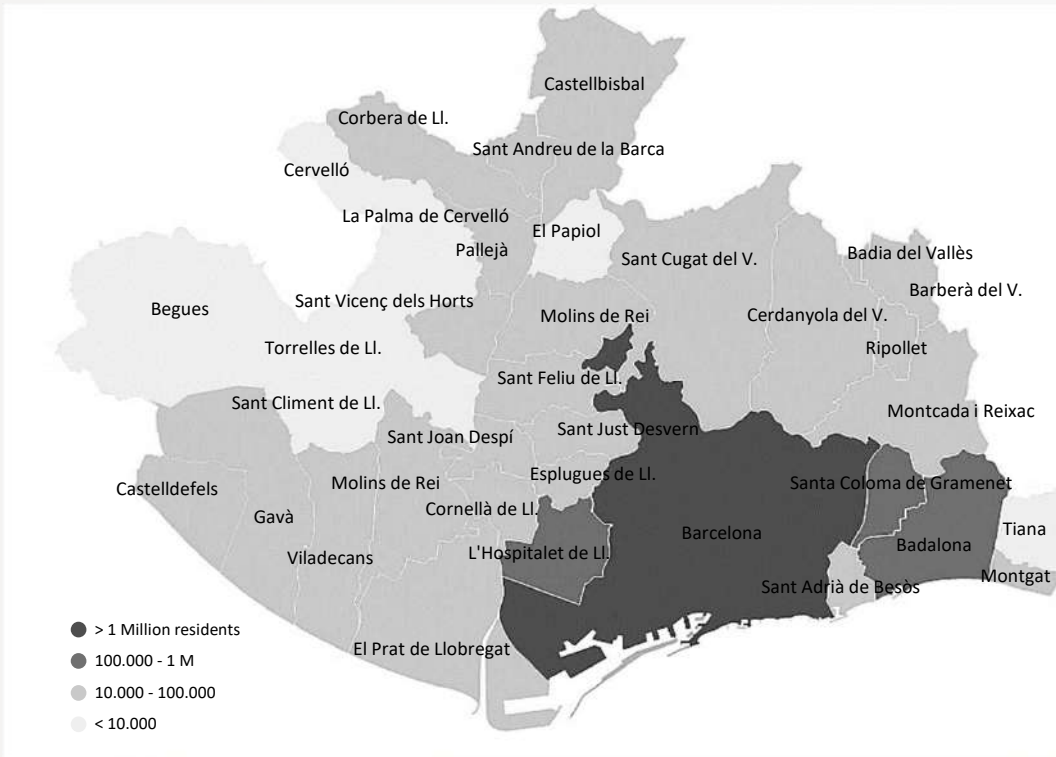
The metropolitan territory

36
municipalities

636
km²

3.247.281
inhabitants

120.799 M€
GDP



METROPOLITAN REGION
20% Area
67% Population
75% GDP



CATALUNYA
2% Area
43% Population
52% GDP



EUROPE
0,01% Area
0,6% Population
0,8% GDP

SCENARIO 2050



	2020	2050
dwelling	2.059.872	2.542.682
population	5.226.382	5.925.247
jobs	2.259.441	2.830.952

INCREASE
500.000 dwellings
700.000 population
600.000 jobs

New Barcelona's Metropolitan Master Plan (PDU)

Urban planning strategy at AMB for the next 25 years

New vision (urban model) for the metropolitan area

Diversity into a common project

New methodologies and tools



**GREEN
INFRASTRUCTURE**



URBAN METABOLISM



**ECONOMIC
DEVELOPMENT**



SOCIAL COHESION



MOBILITY



INFRASTRUCTURES – BARCELONA RING ROADS (RONDES)

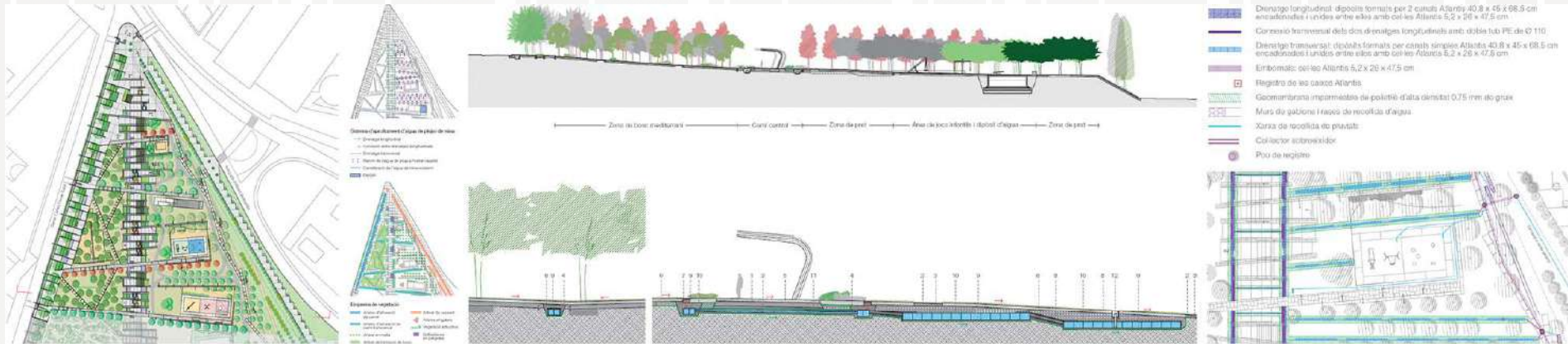


PUBLIC SPACE



Recovery of open natural spaces and construction of facilities

PROJECTS AND WORKS



From the project to the execution

More than 7,000 actions

PARKS NETWORK



53 parks • 300 ha • 28 municipalities

PARKS



Historical park

Awareness

Urban park

Maintenance

BEACHES

40 beaches • 250 ha • 30 km • 8 municipalities • 42 km coastline



Urban beach

Urban furniture & services

Wild beach

Maintenance

HOUSING



Establishment of an Observatory

Purchase or rental

Rehabilitation

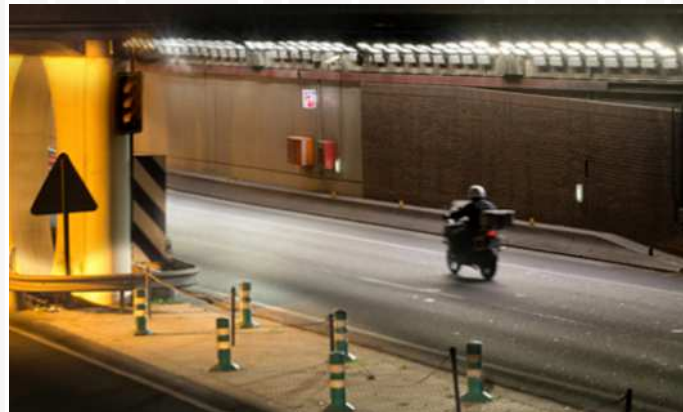
Energy poverty

INNOVATION - SMART CITIES

Mobile applications



LED streetlights



Smart streetlights



Smart poles



Smart waste bins

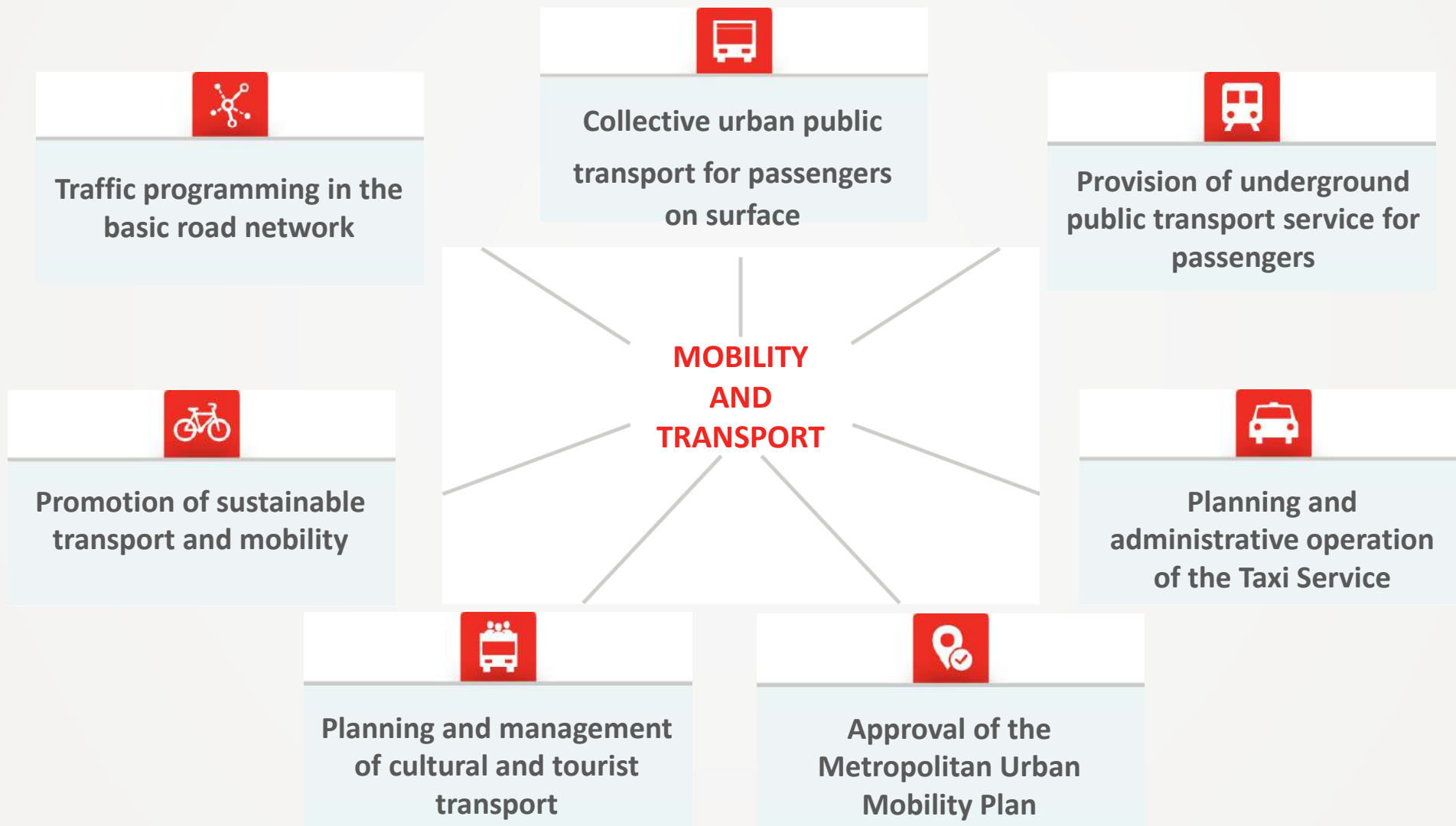


Solar charging stations



Mobility and transport

AMB transport competences



MEANS OF TRANSPORT



Bus: 210 lines

Taxi: 10.523 vehicles

Metro: 11 lines

Tourist Bus

Aerobus

SUSTAINABLE TRANSPORT



Electric bus

Cycling lanes

ELECTRIC VEHICLE FOSTERING

Bicibox

Electric taxi

PROMOTION AND PROVISION OF BICYCLES AND ELECTRIC VEHICLES

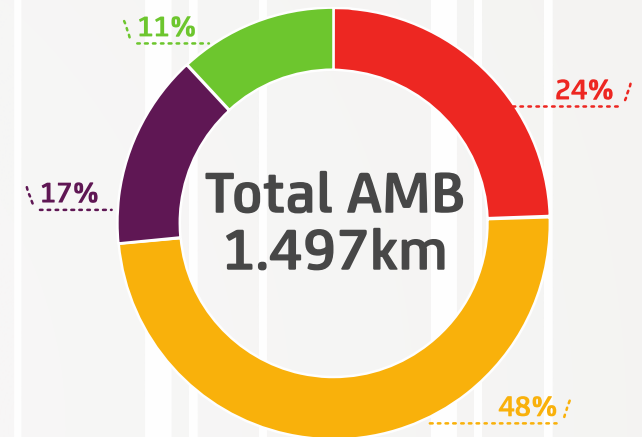
ELECTRIC VEHICLE



BICIBOX



CYCLING NETWORK



- carril bici 357 km
- via pacificada 715 km
- via ciclable 252 km
- camí verd 172 km



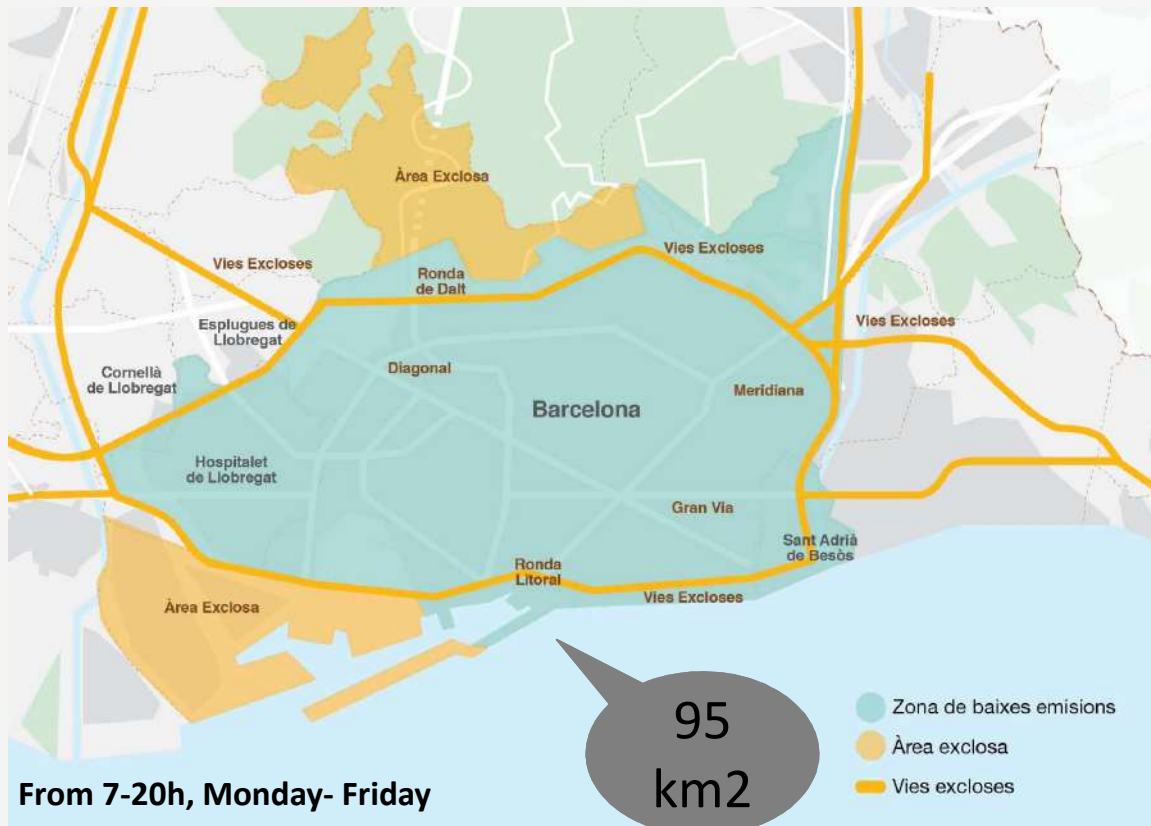
Promotion and subsidy actions for the purchase of an electric bicycle

LOW EMISSION ZONE – RING OF BARCELONA

Pollution is one of the main citizen concerns



LOW EMISSION ZONE – RING OF BARCELONA



LEZ Ring of Barcelona



2020



2022





Ecology

WATER

WASTE

SUSTAINABILITY

THE WATER CYCLE



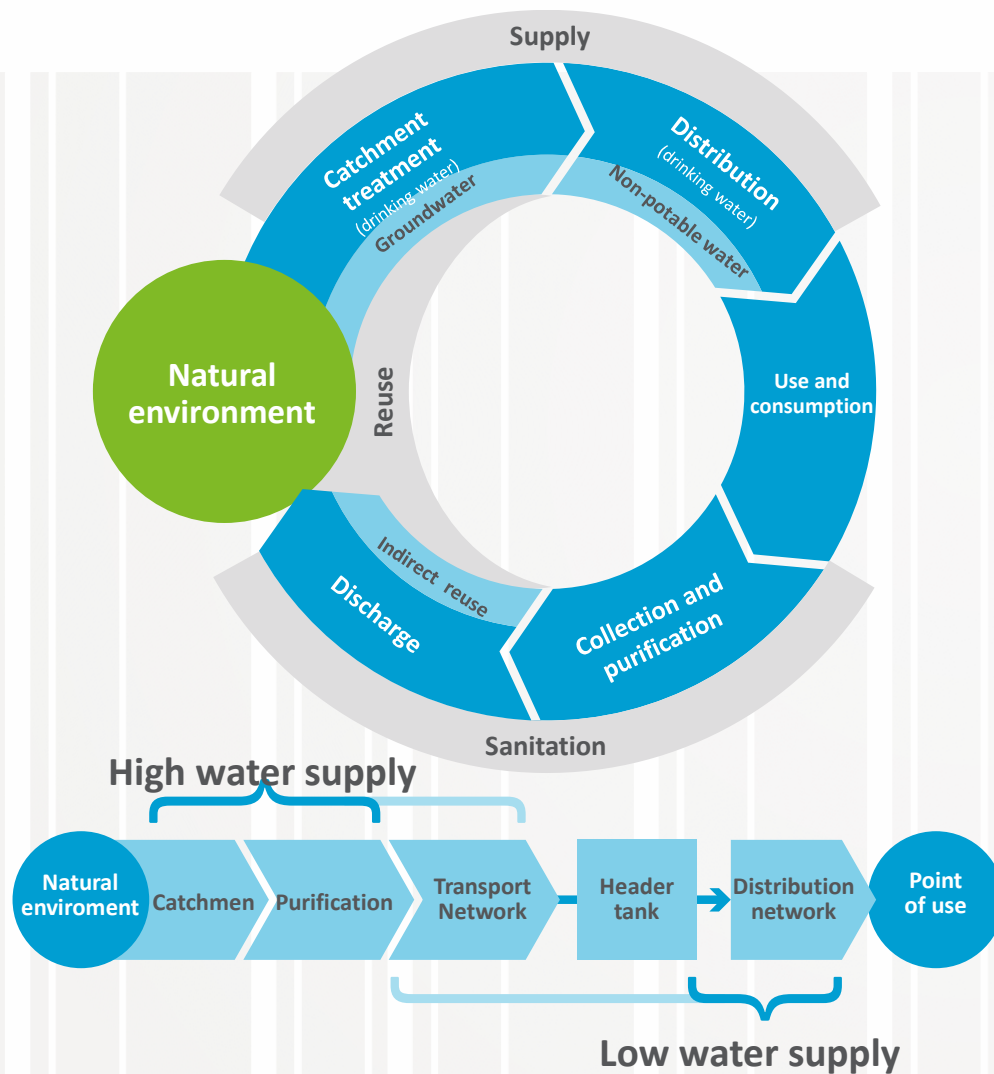
Purification

Reuse

Supply

Sanitation

THE WATER CYCLE



Generation

156 hm³
of water supplied

82,05%
of network performance

9 supply companies

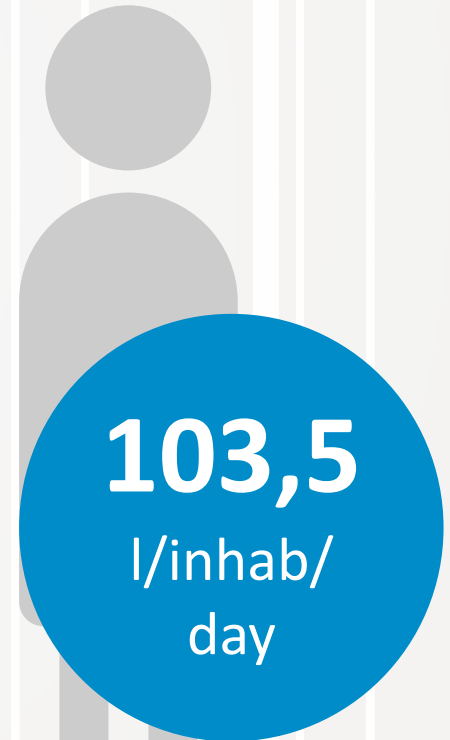
Sanitation

251,5 hm³
of treated water

Reuse

5,1 hm³
Reused water

Domestic consumption



WASTE TREATMENT PLANTS



Prevention



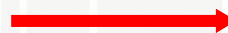
Reuse



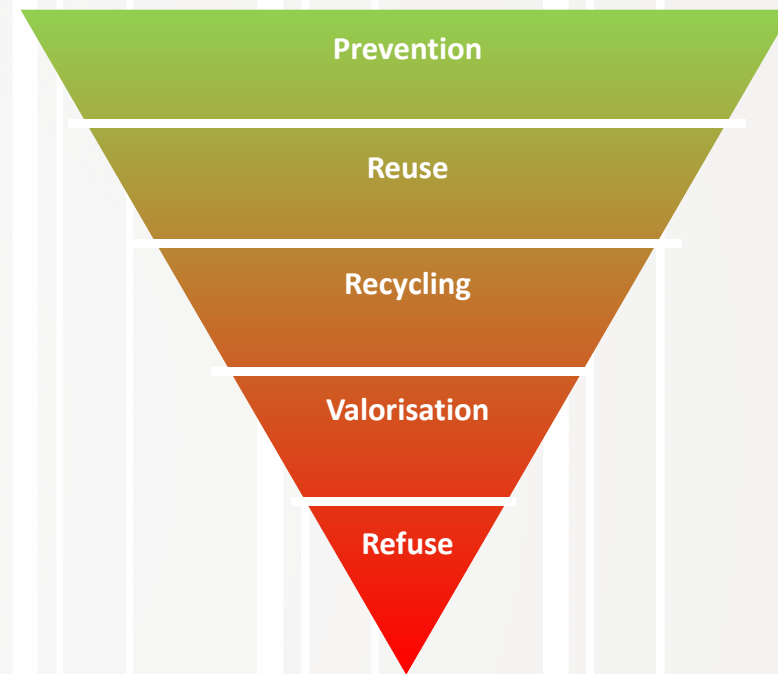
Recycling



Valorisation



Refuse



Recycling centre

Repaired is better than new

Waste prevention

Closed controlled landfill

AMB SUSTAINABILITY PLAN - PSAMB



Energy and climate change

Environmental health

Education for sustainability



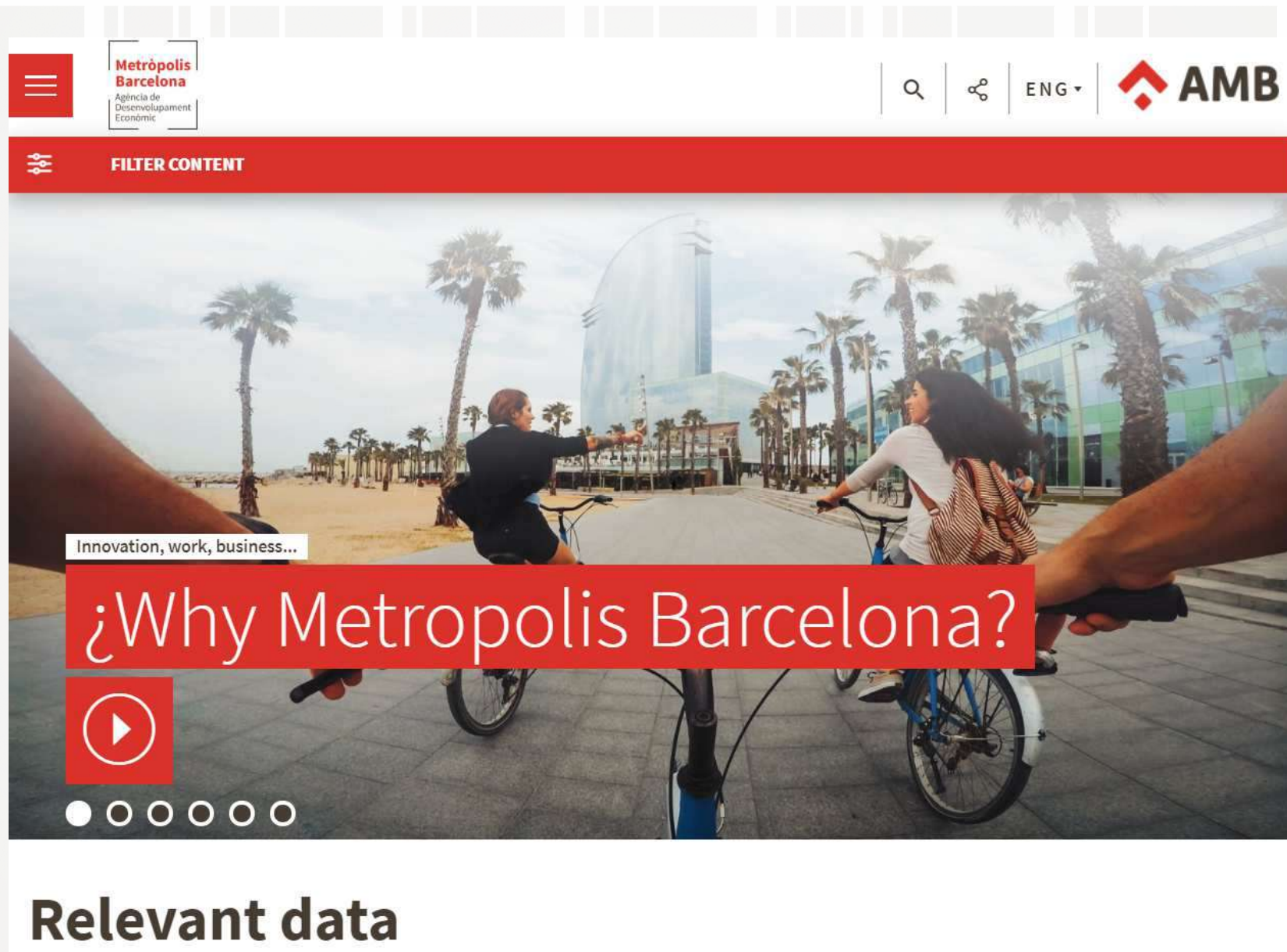
Economy and society

STRATEGIC PLANNING

SOCIAL POLICIES

ECONOMIC DEVELOPMENT

ECONOMIC DEVELOPMENT AGENCY



Metropolis Barcelona
Agència de Desenvolupament Econòmic

AMB

ENG ▾

FILTER CONTENT

Innovation, work, business...

¿Why Metropolis Barcelona?

Relevant data

The screenshot shows a video player interface. At the top left is a hamburger menu icon. Next to it is the Metropolis Barcelona logo and name, with the subtitle 'Agència de Desenvolupament Econòmic'. On the right side of the header, there are icons for search, share, and language selection (currently set to 'ENG'). Below the header is a red bar with a filter icon and the text 'FILTER CONTENT'. The main content area features a large video player with a background image of people cycling on a boardwalk near a modern building and palm trees. A red semi-transparent banner is overlaid on the video with the text '¿Why Metropolis Barcelona?'. Below the banner is a red play button icon and a progress bar with five white circles. The video player is set against a white background with a subtle grid pattern.

ECONOMIC DEVELOPMENT

Reindustrialisation

Industrial estate plan
 Industrial information
 Business Support Office (OAE=

New economies

Green
 Collaborative
 Social and solidary

Tourism and BCN brand

Positioning
 Strategy
 Commercialisation

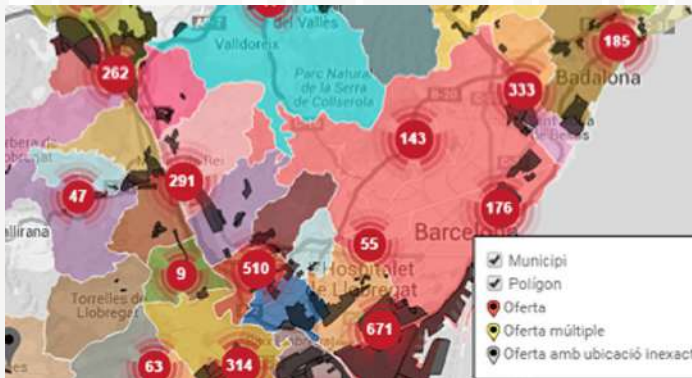
Development areas



Industrial estate plan



Services to companies



Reindustrialisation

New economies

Metropolitan tourism

STRATEGIC PLANNING TOOLS

Partnerships



Metropolitan studies



Participation and strategic planning



SOCIAL POLICIES

Fight against inequality

Energy shortages
Access to public services

Social partnership

Coordination board
Social agents

Coexistence and support to municipalities

CUESB rehabilitation
Public space



Social emergencies

Fighting inequality

Public space

Housing

Cohesion and coexistence

Energy shortages

INTERNATIONALISATION PLAN

2021-2025

BARCELONA METROPOLITAN AREA



STRATEGIC LINES



S.L.1 Influence on the European and international political agenda

S.L.2 European and international fundraising

S.L.3 Innovation and knowledge management in metropolitan areas

S.L.4 International economic outreach

S.L.5 International Cooperation



S.L.1 Influence on the European and international political agenda



S.L.2 European and international fundraising



2019-2023

129 M€ EU Funding

73 projects

S.L.3 Innovation and knowledge management in metropolitan areas



S.L.4 International economic promotion.



S.L.5 International Cooperation. International Cooperation Master Plan 2020-23



THANK YOU!

xtiana@amb.cat