

# OPPORTUNITIES FOR EXCHANGE OF EXPERIENCES AND KNOWLEDGE



**FUNCTIONAL AREAS IN THE EU**

Crossing administrative boundaries for green transition and sustainable development

## OPPORTUNITIES FOR EXCHANGE OF EXPERIENCES AND KNOWLEDGE

|   |           |
|---|-----------|
| <b>TAIEX.....</b>   | <b>2</b>  |
| <b>Net Zero City Learning Programme for Twin Cities .....</b> | <b>4</b>  |
| <b>P2p Scalable Cities .....</b>                              | <b>5</b>  |
| Site Visits .....   | 5         |
| <b>Interreg Europe.....</b>                                   | <b>10</b> |
| Peer Review .....   | 10        |
| Matchmaking.....  | 11        |
| <b>European Urban Initiative .....</b>                        | <b>12</b> |
| Peer-Learning Activities.....                                 | 12        |
| Udn Type Activities.....                                      | 12        |

## INTERREG PRE-CALL NETWORKING

Interreg's second call for project proposals is coming soon! The call will be open from 15 March to 9 June 2023.

If you are interested in the call, join Interreg's series of thematic networking events in November and December to share project ideas and kickstart the search for new project partners. The events take place online. Each session will be dedicated to a different topic:

- **29 November (10-12:00 CET): 'greener Europe'**
- **1 December (10-12:00 CET): 'more connected Europe', 'Europe closer to citizens', and 'better regional governance'**

Are you looking for partners? Browse the people and organisations in Interreg's community and see if you find your match there.

## URBACT PARTNER SEARCH TOOL FOR THE NEXT CALL FOR ACTION PLANNING NETWORKS

The next call for Action Planning Networks opens in January 2023, but you can already start sharing your project ideas and looking for partners, through URBACT's virtual search tool.

Action Planning Networks are made from **8 - 10 partner cities** from all sizes, coming from over Europe and respecting a balance among all regions types. Led by a Lead Partner and accompanied by a Lead Expert, partners will **work together around an urban policy challenge and develop a local Integrated Action Plan.**

More information around the call will follow URBACT's Monitoring Committee in November. This tool offers two main opportunities:

- **identification of potential projects where you can become a partner, already listed on the URBACT platform**
- **transmission of your own project idea, for which you need to find project consortium partners**

TAIEX-REGIO Peer2Peer helps organise short-term exchanges with one or more peers from other EU countries to meet specific learning needs. The TAIEX-REGIO Peer 2 Peer was created in cooperation with Directorate-General for Regional and Urban Policy. It facilitates **short-term exchange of know-how between cohesion policy experts and administrations involved in the management of the European Regional Development Fund (ERDF) and Cohesion Fund** in all Member States. These exchanges can be organised as either **one-off meetings or a series of events**. They help staff from eligible bodies get answers to their questions on **thematic aspects of the EU Regional and Urban Policy or on cross-cutting issues related to the management and control of the programmes**.

TAIEX-REGIO Peer2Peer is open to staff working for programme authorities or other bodies involved in the management of ERDF, CF and JTF programmes in all EU countries. All institutions that are part of the management and control system are eligible to request an exchange, namely:

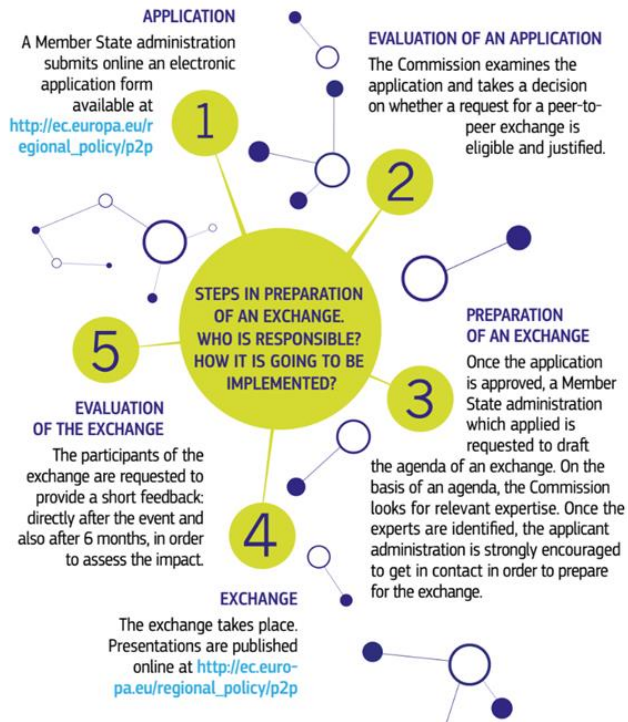
- Managing Authorities
- Intermediate Bodies
- Audit Authorities
- National Coordinating Bodies
- Joint Technical Secretariats Of European Territorial Cooperation Programmes
- Other Bodies That Are Directly Involved In Performing Certain Tasks Associated With The Management And Control Of ERDF/CF/JTF Programmes May Also Be Eligible (E.G. Public Procurement Offices)

There is **no limit to the number of exchanges** that a single institution can request. As far as they are linked to clear learning needs, and supported by positive past experiences, programme authorities or other bodies can request as many exchanges as they deem useful. These can focus on different aspects of the same topic or different topics. The exchanges can be requested separately through different applications or together in a single application as “series of events”. This last option is particularly recommended to develop coherent capacity building programmes complementing different learning modes.

It is not necessary to know already the peer expert you would like to exchange with. It is sufficient to indicate your learning needs and we will help you find the right expert/s for you. TAIEX owns an extensive database of more than 6,500 experts from all EU countries on almost any field related to the EU Regional and Urban Policy and funds management; whatever the topic you are interested in, we can certainly find the right expert for you. However, if you already know a peer, an institution, or a region/country you would like to exchange with, you can indicate it in your application form. This will help speed up the organisation of the event.

**USEFUL LINKS:** [TAIEX WEBSITE](#), [TAIEX REGIO PEER2PEER](#), [TAIEX INFORMATIVE MATERIAL](#)

## HOW DOES IT WORK IN PRACTICE?



## WHAT WE FUND UNDER TAIEX-REGIO PEER 2 PEER

### Costs financed by TAIEX-REGIO PEER 2 PEER

|                |   |
|----------------|---|
| Expert mission | For public sector expert who is providing assistance: <ul style="list-style-type: none"> <li>Travel and accommodation</li> <li>Per diem</li> <li>Fixed daily allowance EUR 350</li> </ul> |
| Workshop       | For public sector speaker: <ul style="list-style-type: none"> <li>Travel and accommodation</li> <li>Per diem</li> <li>Fixed daily allowance of EUR 350</li> </ul>                         |
| Study visit    | <ul style="list-style-type: none"> <li>Travel and accommodation for up to 3 eligible participants</li> <li>Fixed daily allowance of EUR 350 to host institution (upon request)</li> </ul> |

## WHAT ARE THE AREAS OF ASSISTANCE?

TAIEX-REGIO PEER 2 PEER covers all topics of a direct relevance for ERDF/CF investments. Examples of exchanges that have already taken place are available at:

[http://ec.europa.eu/regional\\_policy/p2p](http://ec.europa.eu/regional_policy/p2p)

## NET ZERO CITY LEARNING PROGRAMME FOR TWIN CITIES

The NZC City Learning Programme is a **multi-month programme that aims to transfer knowledge and build capacities across Pilot and Twin Cities [Twins] engaged in the programme**. At its core stands the strategy of impact through peer learning. Peer learning is an educational approach **that couples two or more learners with a similar background and allows them to actively shape each other's development** through knowledge exchange and collaborative problem-solving.

In NZC, we are deploying this principle by **pairing each Pilot City** (or in the case of multi-city application, the group of cities) **with two or three Twins**. Those Twins will be cities with a similar background as the Pilot Cities and might face similar challenges. These could be based on geography, national context, socio-economic or similar. For the duration of the programme, NZC will guide those cities through a series of **online and in-person meetings**. These meetings aim to create a clear understanding of each other's challenges and exchange or generate potential solutions. It is foreseen that each Pilot City visits their Twins once with a small delegation, and the Twins will also visit the Pilot City once.

The programme team will approach Pilot Cities to develop tailored city profiles to ensure a high-quality match in the selection of the Twins. **The current timeline foresees the Call for Twins for June 2023 and the programme's start for September 2023**. More information will be made available to the Pilot Cities at a later date.

SCALABLE CITIES P2P LEARNING PROGRAMME is offered to cities to **build capacity in public administrations and build knowledge**. Scalable Cities represents 120 cities who are involved in 18 Smart Cities and Communities projects funded by Horizon 2020 with around EUR 345 million. The Scalable Cities Peer-to-Peer (P2P) Learning programme is part of the activities organised by the Scalable Cities Secretariat to support **capacity building and knowledge sharing**.

The overall objectives of the P2P Learning programme are to **enable cities to share their knowledge, experiences and provide expert support to overcome barriers and challenges related to the implementation of smart city solutions**. Participants can take the newly gained information back to their cities and try to adapt or develop their smart solutions and concepts in reaching the European climate goals and targets.



### P2P Learning Programme

The design of the Peer-to-Peer (P2P) Learning programme is aiming on one hand to accelerate the knowledge exchange between cities **on good and bad practices including the lessons learnt and on the other hand supporting** cities with specific experts to replicate successful demonstrators and create more impact.

Providing peer-to-peer support by cities and experts involved in the Scalable Cities projects is one of the main objectives of this programme.

The Peer-to-Peer Learning programme is part of the activities that the Scalable Cities (SC) Secretariat offers to cities, which targets to build capacity in public administrations and build knowledge. The Secretariat is responsible for the facilitation and promotion of a collaborative peer-to-peer environment and encourages cities and experts within the Scalable Cities Group.

The Scalable Cities P2P Learning programme provides tailor-made support for cities through three capacity learning and exchange activities: expert review, expert mission, site visits.

## SITE VISITS

**Site Visits promote the exchange of best practices, policies and solutions between cities through an on-the-field visit and direct exchange between one Host City and up to five Visitor Cities, with the SC Secretariat acting as the facilitator.**

Site Visits offer a platform for cities that are leading important initiatives to showcase them to other peers and share their experience on a concrete domain. For visitor cities, the programme provides an **opportunity to learn more about policies led by other peers, visit projects and see solutions in a real environment, while networking with international partners**. Overall, the main goals of Site Visits are to open the mind set to innovative and sustainable solutions, promote networking between cities, and facilitate the exchange of best practices.

**Site Visits are organised around one shared challenge between cities or an inspiring project led by the Host City.** During the Site Visit, the Host City will be sharing with peers information about how a concrete project or a focused initiative was designed and implemented. Site visits **can involve a series of visits in the field and interactions with public officers involved in the project or initiative**. Site Visits **can also include workshops**

**promoting exchange of practices between participants**, and other activities that promote networking among cities as well as the experts involved in the initiative or solution providers. **Cities with particular experience on a topic or having implemented an innovative idea can host a Site Visit to showcase their experience and solution.** Visitor cities with interest in the topic can be selected to participate in the Site Visit.

The topics for the Site Visits in the P2P Site Visit Cycles during 2022/2023 are:

- Positive Energy Building to Positive Energy District
- Upscaling of pilot projects within the own city/Governance Innovation
- Funding and New Business Models
- Transition from a Fellow to a Lighthouse city
- Digital Transformation
- Monitoring and Evaluation

**Exchange on best practices, challenges, and technical sessions can take place during a two-to-three-day Site Visit.**

**During the 2022-2025 period, there will be 4 calls (Winter, Spring) and 5 site visits organised per call.**

| TIMING  | TASKS  | PARTIES INVOLVED   |
|---|--|--|
| <b>Week 1</b><br>3 weeks before the exchange activities | Inception meeting<br>Presenting challenges and next steps  | All parties (Secretariat and Host Cities)                      |
| <b>Week 1 or week 2</b>                                 | Letter of Commitment between Cities and the Secretariat  | All parties (Secretariat and Cities)                           |
| <b>Week 2</b><br>3 weeks before the exchange days       | Preparation meeting<br><br>Preparation of the visit by the Host city (Agenda, Location, rooms)<br><br>Booking flights and accommodation etc. | Host City & Secretariat<br><br>Host City<br><br>Visitor Cities |
| <b>Week 3</b><br>2–3 days                               | Three-day visit<br>Documentation   | Host City and Visitor Cities<br>Host City                      |
| <b>Week 4</b><br>One week after the exchange days       | Submission of the resumé (report) and testimonials<br>Submission of reflection report and testimonials                                       | Host City<br><br>Visitor Cities                                |
| <b>Week 5</b><br>Two weeks after the exchange days      | First evaluation of the report   | Secretariat  |
| <b>One year after the activities</b>                    | Evaluation of impact   | Secretariat/Cities   |



### Eligible entities:

- Host Cities: Lighthouse and Fellow cities participating in ongoing or ended SCCLighthouse projects.
- Visitor Cities: Lighthouse and Fellow cities participating in ongoing or ended SCC Lighthouse projects and Cities from other initiatives.

| Activity    | Overall target                                     | No. calls | Average awarded/call   | Call opening  | Execution of activity   |
|-------------|--|-----------|------------------------|---|---|
| Site visits | 20 activities 20 host cities<br>100 visitor cities | 4 calls   | 5 site visits per call | <b>2022</b><br><b>Call 1</b> : Winter 2022 (Sept & Nov)<br><b>2023</b><br><b>Call 2</b> : Spring 2023 (Feb & April)<br><b>Call 3</b> : Winter 2023 (Sept & Nov)<br><b>2023</b><br><b>Call 4</b> : Spring 2024 (Feb & April) | <b>2023</b><br>February – March 2023<br><b>2023</b><br>May – June 2023<br><b>2024</b><br>February – March 2024<br>May – June 2024 |

Site Visits are a service that SC Secretariat offers to cities that want to share their advanced experience on a specific domain with other cities, and to visitor cities that want to learn from their Experience. The SC Secretariat **entirely covers the cost of matching** Host and Visitor cities depending on interests and expectations of the visit.

The following list includes costs that will be reimbursed by the Secretariat for the activities. The rules are based on the rules on the reimbursement of expenses incurred by people from outside the Commission invited to attend meetings in an expert capacity (2007). The following is a list of what will be reimbursed by the Secretariat for the activities.

- **Reimbursement of costs for Host cities (Site Visits):** Meeting rooms, Catering, and local transport: The Secretariat will reimburse costs incurred by host cities up to €700.
- **Reimbursement of costs for Visitor cities (Site Visits):** Travel expenses: up to €500; Accommodation: €100 per night; Meals/local transport: €92 per day.

### USEFUL LINKS:

- Scalable Cities [P2P WEBSITE](#)

## List of Lighthouse and Follow Cities of Scalable Cities

Closed projects (as of May 2022)

| Lighthouse projects of Scalable Cities | Lighthouse Cities           | Follower Cities             |
|--|-----------------------------|-----------------------------|
| <b>Remourban</b>                       | Valladolid (ES)             | Seraing (BE)                |
|  | Nottingham (UK)             | Miskolc (HU)                |
|  | Tepebasi (TR)               |                             |
| <b>Triangulum</b>                      | Manchester (UK)             | Leipzig (DE)                |
|  | Eindhoven (NL)              | Praha (CZ)                  |
|  | Stavanger (NO)              | Sabadell (ES)               |
| <b>Growsmarter</b>                     | Stockholm (SE)              | Cork (IE)                   |
|  | Cologne (DE)                | Graz (AT)                   |
|  | Barcelona (ES)              | Porto (PT)                  |
|  |                             | Suceava (RO)                |
|  |                             | Valletta (MT)               |
| <b>SmartEnCity</b>                     | Sønderborg (DK)             | Asenovgrad (BG)             |
|  | Vitoria Gasteiz (ES)        | Lecce (IT)                  |
|  | Tartu (EE)                  |                             |
| <b>Replicate</b>                       | Donostia-San Sebastián (ES) | Essen (DE)                  |
|  | Florence (IT)               | Lausanne (CH)               |
|  | Bristol (UK)                | Nilüfer (TR)                |
| <b>Smarter Together</b>                | Lyon (FR)                   | Venezia (IT)                |
|  | Munich (DE)                 | Sofia (BG)                  |
|  | Vienna (AT)                 | Santiago de Compostela (ES) |
| <b>SharingCities</b>                   | London (UK)                 | Bordeaux (FR)               |
|  | Milan (IT)                  | Bourgaz (BG)                |
|  | Lisbon (PT)                 | Warsaw (PL)                 |
| <b>Ruggedised</b>                      | Glasgow (UK)                | Brno (CZ)                   |
|  | Umea (SE)                   | Gdansk (PL)                 |
|  | Rotterdam (NL)              | Parma (IT)                  |
| <b>MySmartLife</b>                     | Helsinki (FL)               | Bydgoszcz (PL)              |
|  | Hamburg (DE)                | Palencia (ES)               |
|  | Nantes (FR)                 | Rijeka (HR)                 |
| <b>MatchUp</b>                         | Valencia (ES)               | Herzliya (ISR)              |
|  | Dresden (DE)                | Kerava (FL)                 |
|  | Antalya (TR)                | Ostend (BE)                 |
|  |                             | Skopje (MKD)                |
| <b>Stardust</b>                        | Tampere (FL)                | Cluj-Napoca (RO)            |

|                     |                 |                             |
|---------------------|-----------------|-----------------------------|
|                     | Pamplona (ES)   | Derry (UK)                  |
|                     | Trento (IT)     | Kozani (GR)                 |
|                     |                 | Litoměřice (CZ)             |
| <b>IRIS</b>         | Gothenborg (SE) | Alexandroupolis (GR)        |
|                     | Utrecht (NL)    | Focşani (RO)                |
|                     | Nice (FR)       | Santa Cruz de Tenerife (ES) |
|                     |                 | Vaasa (FL)                  |
| <b>+CityxChange</b> | Trondheim (NO)  | Alba Iulia (RO)             |
|                     | Limerick (IE)   | Pisek (CZ)                  |
|                     |                 | Sestao (ES)                 |
|                     |                 | Smolyan (BG)                |
|                     |                 | Võru (EE)                   |
| <b>MAKING-CITY</b>  | Oulu (FL)       | Bassano del Gappa (IT)      |
|                     | Groningen (NL)  | León (ES)                   |
|                     |                 | Kadiköy (TR)                |
|                     |                 | Trencin (SK)                |
|                     |                 | Vidin (BG)                  |
|                     |                 | Lublin (PL)                 |
| <b>SPARCS</b>       | Espoo (FL)      | Lviv (UKR)                  |
|                     | Leipzig (DE)    | Maia (PT)                   |
|                     |                 | Kifissia (GR)               |
|                     |                 | Kladno (CZ)                 |
| <b>POCITYF</b>      | Alkmaar (NL)    | Bari (IT)                   |
|                     | Évora (PT)      | Celje (SL)                  |
|                     |                 | Granada (ES)                |
|                     |                 | Hvidovre (DK)               |
|                     |                 | Ioannina (GR)               |
|                     |                 | Ujpest (HU)                 |
| <b>Atelier</b>      | Amsterdam (NL)  | Bratislava (SK)             |
|                     | Bilbao (ES)     | Budapest (HU)               |
|                     |                 | Copenhagen (DK)             |
|                     |                 | Krakov (PL)                 |
|                     |                 | Matosinhos (PT)             |
|                     |                 | Riga (LV)                   |
| <b>RESPONSE</b>     | Dijon (FR)      | Brussels (BE)               |
|                     | Turku (FL)      | Zaragoza (ES)               |

## INTERREG EUROPE

Interreg Europe is an interregional cooperation programme, co-funded by the European Union. Through this programme, the European Union strives to reduce disparities in the levels of development, growth and quality of life in and across Europe's regions. The programme offers [funding opportunities](#) and policy support ([peer review](#), [matchmaking](#) și [helpdesk](#)), together with [best practice examples](#) and [learning events](#).

As the second pillar of the Interreg Europe programme, the Policy Learning Platform provides access to the wealth of knowledge and expertise generated by these projects, thus offering **shortcuts to smart policy solutions** without the need to reinvent the wheel. Ranging from thematic publications and an online good practice database to an interactive community of peers and individualised expert services, the platform services for continuous policy learning are implemented by a European team of thematic experts covering the **four thematic priorities of Interreg Europe**:

- Research and innovation
- SME competitiveness
- Low-carbon economy
- Environment and resource efficiency

**The Policy Learning Platform explicitly encourages the participation of regions and managing authorities which, for different reasons, do not have the possibility to participate in Interreg Europe projects.** Hence, the ad-hoc services provided by the platform complement the opportunities for project funding offered by the programme, thus underlining Interreg Europe's ambition to be at the disposal of all regions in the EU, Norway and Switzerland.

### PEER REVIEW

As stipulated in the strategic documents for Interreg Europe 2014-2020, the Policy Learning Platform shall support **ongoing EU-wide regional policy learning in the four thematic priorities of the programme**, mainly with regard to the implementation of the **Growth and Jobs** and, where relevant, **ETC goals**.

- As the key target group of Interreg Europe, **managing authorities and intermediate bodies responsible for the management of structural funds** (both mainstream programmes at national/regional levels and ETC programmes) are strongly encouraged to submit their requests for peer review support under the present call.
- Other **public bodies responsible for local or regional development policies** are equally welcome to submit an application for peer review support. However, for peer reviews targeting other local or regional development policies (not related to the management of structural funds), solely applications submitted by the local or regional authorities directly responsible for the addressed policies can be considered.

The call for interregional peer reviews is launched on 9 October 2019 and **remains open permanently**. Applicants can submit their application **at their earliest convenience**. Applications are subject to the evaluation process on a **rolling basis**.

Interregional peer reviews supported by the Policy Learning Platform allow managing authorities and public bodies in charge of local or regional development policies to receive **hands-on feedback and advice from other European regions (peers) on the implementation of their policies and programmes**.

Peers from a selected number of regions are invited to your region – the host region – to examine the specific territorial and thematic context, and make recommendations based on their experience and expertise. An interregional peer review is usually carried out **onsite over two full days in the region calling for peer support**.

However, following the current sanitary situation in Europe, **the Policy Learning Platform can also propose an online format to its beneficiaries**. Whether onsite or online, the peers analyse the regional situation, discuss approaches, solutions and recommendations, draft a “to-do list” for follow-up action and provide immediate feedback to the beneficiary of the peer review. Some preparation is required on all sides to ensure the selected peers are well matched to the needs of the host region

A peer review is a **two-day meeting in which you look at your regional policy challenge together with a group of carefully selected peers with relevant experience and our Platform experts**. Relevant local stakeholders can also be involved. The objective is to give you advice, recommendations and an action plan to resolve your challenge.

#### **During the peer review, you will get:**

- An in-depth analysis of your policy challenge
- An exchange of experience with relevant policymakers
- A presentation of potential solutions
- You will benefit from specific recommendations and knowledge to make better-informed decisions.

We look for peers with relevant thematic experience and expertise according to the information you provide in your application form. First, through a “call for interest”, we conduct a list of selected European policymakers from the Interreg Europe community who are best suited to understand your specific territorial and policy context, and who can give you concrete and useful advice. Then, we consult with you the list of selected peers who agreed to participate to make the final selection. We offer the possibility to **cover catering and interpretation costs both for on-site or online peer review**. You can find additional details in the [Terms of Reference](#).

1. Start by consulting the [Terms of Reference](#) to make sure you are eligible
2. Download the [template](#) to prepare your application.
3. Submit your application by filling in the [online form](#).

#### **MATCHMAKING**

A matchmaking session is a **two-hour in-depth discussion** with a selected group of peers about your regional policy challenge, moderated by our Platform experts. The discussion is tailored to your **policy needs and questions**. We invite relevant policymakers to share their experiences. These meetings can be **organised in person or online**. The matchmaking sessions are a great opportunity to meet relevant peers from other parts of Europe and find inspiration in their good practices.

## EUROPEAN URBAN INITIATIVE

The European Urban Initiative is an essential tool to support cities of all sizes, to build capacity and knowledge, to support innovation and develop transferable and scalable innovative solutions to urban challenges of EU relevance. EU platform offers: [funding opportunities](#), [capacity building activities](#) and [inspiring initiatives](#).

**The capacity-building component of EUI seeks to improve and increase the capacities of cities in the design of sustainable urban development policies, strategies and practices in an integrated and participative way.** It also contributes to **the design and implementation of these policies and action plans on a local, regional and national level.** This element encompasses the cooperation with URBACT IV networks of cities, as well as peer learning activities and Urban Development Network-type capacity building. Building on previous Urban Development Network activities, the European Commission Joint Research Centre (JRC) knowledge and TAEIX mechanism as well as UIA capitalisation work, these activities aim to:

- Improve the capacities of cities **to design and implement sustainable urban development strategies, policies and practices** in an integrated and participative way
- Improve the quality of the **design and overall implementation of sustainable urban development strategies, policies and practices**

The capacity-building activities are available **for cities and managing authorities involved in sustainable development strategies** under the Article 11 of the ERDF/CF Regulation and Cohesion policy programmes, **involved in UIA and EUI-Innovative Actions, URBACT IV cities and cities part of UAEU partnerships, as well as other EU cities.** There are 2 key types of activities: peer-learning activities and UDN type activities.

### PEER-LEARNING ACTIVITIES

Peer-learning activities are organised to provide **targeted, short-term support and to facilitate the exchange of knowledge, good practices and solutions.** They consist in CITY2CITY EXCHANGES and PEER-REVIEWS. These will build on previous methodologies ([TAEIX-REGIO peer to peer](#) and [UDN peer reviews](#)). The activities will be demand-driven to be as close as possible to cities' needs.

- **CITY2CITY EXCHANGES** consist in arrangements between a 'host city' and a 'requesting city', where civil servants visit and learn on **new working methods and innovative approaches on a specific topic linked to sustainable urban development.**
- **PEER REVIEW ACTIVITIES** take the form of **workshops in which cities will be peer reviewed by other cities and relevant stakeholders.** Workshops can be organised for cities if the content is specific to a local needs and challenges of cities or can be transnational with cities from different member states.

### UDN TYPE ACTIVITIES

UDN-type activities comprise of a wide range of **events, seminars**, as well as a compilation of toolkits on good practices, enabling cities to **improve their capacity to design and implement sustainable urban development strategies.** As a follow-up of the Urban Development Network, EUI will create a community of cities, fostering exchanges on topics linked to sustainable urban development and an easier access to knowledge.

EUI will also organise events either country specific or in a cluster of Member States, tailored to respond to the specific needs and challenges of cities together with Urban Contact Points and propose various capacity-building material. EUI and [URBACT](#) will work together to ensure the coordination and complementarity of the capacity building offers.